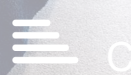




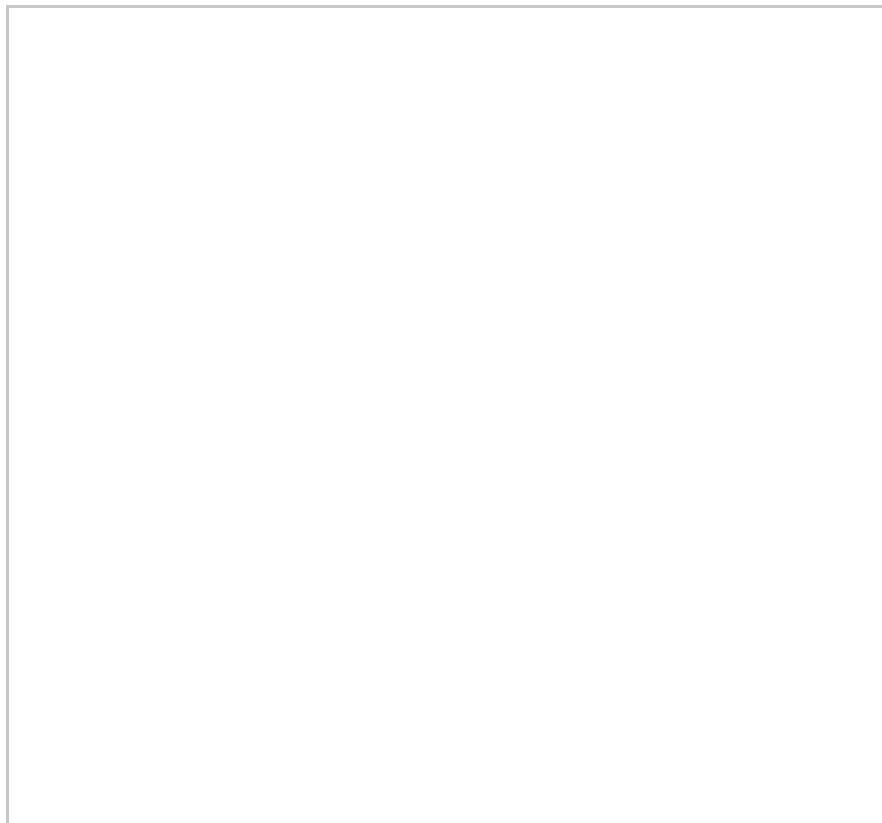
44 Wheatley Court

, Halifax, HX2 8QJ

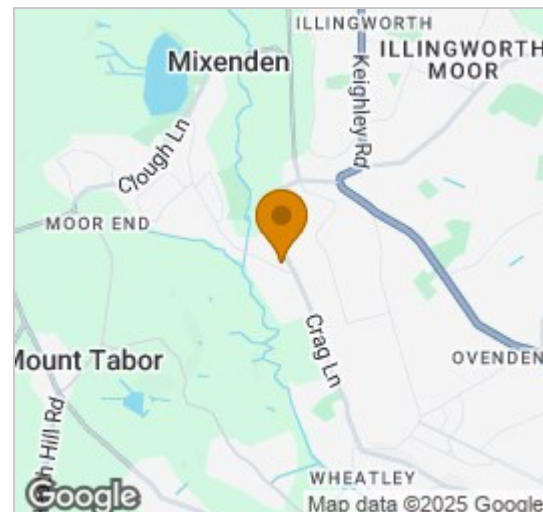
Asking price £67,500



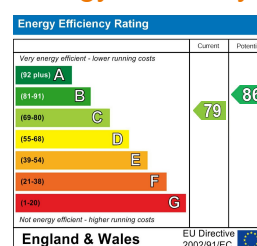
Floor Plan



Area Map



Energy Efficiency Graph



Viewing

Please contact our Sales Office on if you wish to arrange a viewing appointment for this property or require further information.

- TENANTED INVESTMENT ■ 12% Gross yield PROPERTY
- Modern specification
- High floor
- Good location
- Easy access into Halifax
- Balcony
- Fantastic views
- Hands off investment
- Invest today!

ATTENTION INVESTORS - PURCHASE THIS READY MADE INVESTMENT PROPERTY!

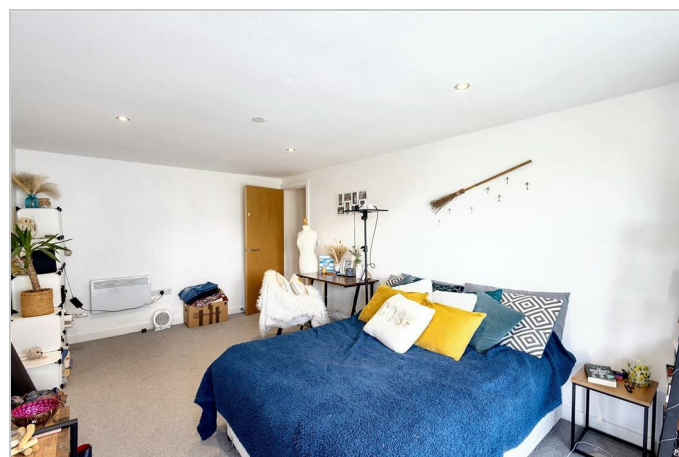
The Lettings Club are delighted to offer to market this tenanted two bedroom apartment in this recently completed development on the outskirts of Halifax, Wheatley Court. Providing super-convenient access into Halifax as well as neighbouring towns and villages, the development offers a great opportunity to invest into Halifax's growing property market for an affordable price tag. The apartment is situated on a high floor and offers fantastic long reaching views of the area.

A look inside the property:

The apartment briefly comprises; Entrance hallway leading into all rooms, modern kitchen, living room with balcony access (currently used as a bedroom), two double bedrooms and a family bathroom.

Financial breakdown:

Occupancy: Tenanted
 Tenure: Leasehold (Approx. 245 years remaining)
 Gross rent: £8,100
 Gross yield: 12%



These particulars, whilst believed to be accurate are set out as a general outline only for guidance and do not constitute any part of an offer or contract. Intending purchasers should not rely on them as statements of representation of fact, but must satisfy themselves by inspection or otherwise as to their accuracy. No person in this firm's employment has the authority to make or give any representation or warranty in respect of the property.

Top Floor, The Refuge Building 9-11 Sunbridge Road, Bradford, BD1 2AZ
 Tel: Email: marcus@thelettingsclub.com <https://www.thelettingsclub.com>